

Threaded Needle Valves

10000 PSI / Metal Seated

- 316 Stainless Steel Stem Standard
- Bonnet Locking Shroud
- Precise Metering
- Maximum Temp 200°



Material Description

ITEM	PART NAME	CARBON STEEL VALVE
1	Body (FxF)	1215 CRS
2	Body (MxF)	AISI 1018
3	Handle	12L14 CRS
4	Handle Bolt	SHCS Zinc Plated
5	Bonnet Cover	Polypropylene
6	Bonnet	12L14 CRS
7	Bonnet O-Ring	Buna-N
8	Stem	316 Stainless Steel
9	Stem Back-up Ring	Buna-N
10	Stem O-Ring	Buna-N
11	Bonnet Locking Shroud	304 Stainless Steel

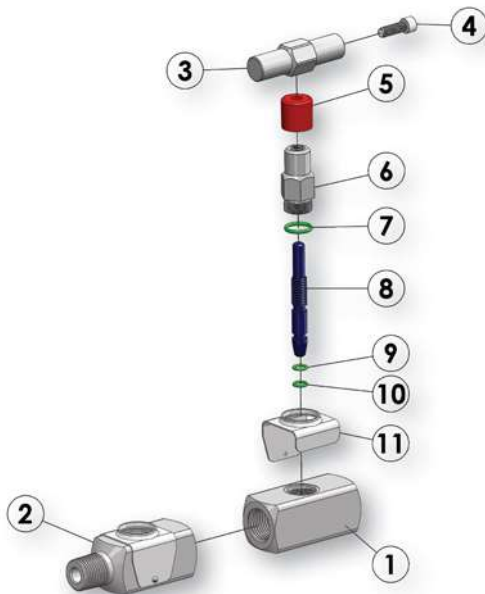
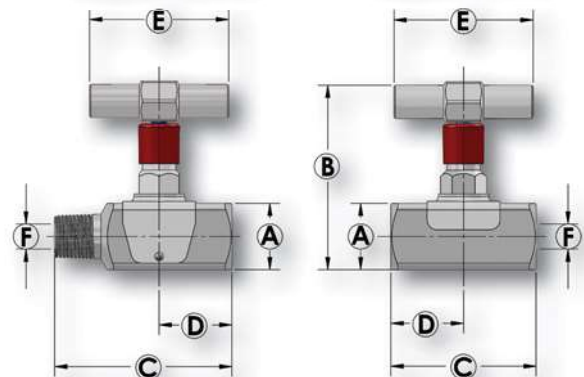


Diagram A (M x F)

Diagram B (F x F)



Dimensional Data

SIZE	CATALOG NUMBER	SEAT	DIAGRAM	A	B	C	D	E	F	LBS.
	CARBON STEEL									
.25	N203-MF	Metal	A	1.25	3.87	3.25	1.37	2.62	.219	1.5
.50	N403-MF	Metal	A	1.25	3.87	3.37	1.37	2.62	.219	1.5
.50	N403-FF	Metal	B	1.25	3.87	2.75	1.37	2.62	.219	1.5