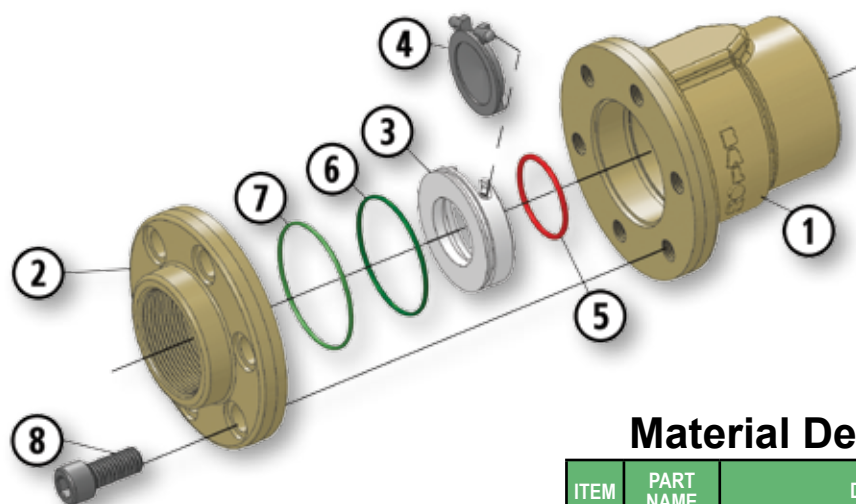


# Threaded End Connection

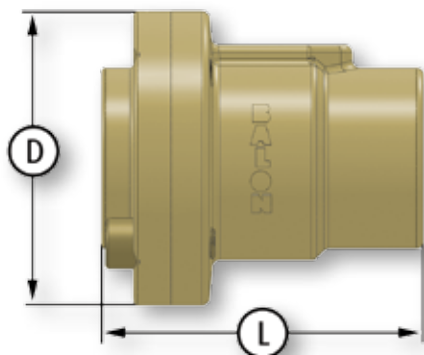
## Series C Nickel Aluminum Bronze

- ASTM B148 GR 955 "9D"
- Swing Check Valve
- 3000 PSI WP
- 2"
- Bolted Body Construction
  - Enhanced Protection Against CO<sub>2</sub> and Saltwater Corrosion
  - Replaceable Seat Disc Cartridge
  - Seal Located in Seat, Thus Protected From Flow
  - NACE Standard
  - 316 Stainless Steel Disc Standard
  - Exceptional Yield Strength
  - Minimizes Risk of Galling Associated with Stainless Steel



### Material Description

ITEM	PART NAME	DESCRIPTION
1	Body	ASTM B148 GR 955
2	Adapter	ASTM B148 GR 955
3	Seat	Replaceable 316 Stainless Steel
4	Disc	Replaceable 316 Stainless Steel
5	O-Ring	Seat Seal: Fluorocarbon
6	O-Ring	Assembly Seal: Fluorocarbon
7	O-Ring	Body Seal: Fluorocarbon
8	Bolts	ASTMA193 B7M



### Dimensional Data

SIZE	CATALOG	PORT	D	L	LBS.
2	2R-C04S-SE	1.5	4.88	5.37	10.9