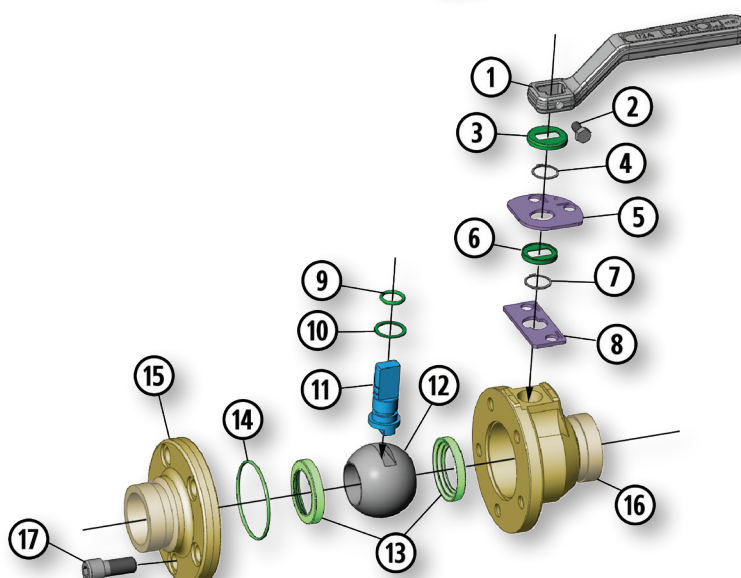
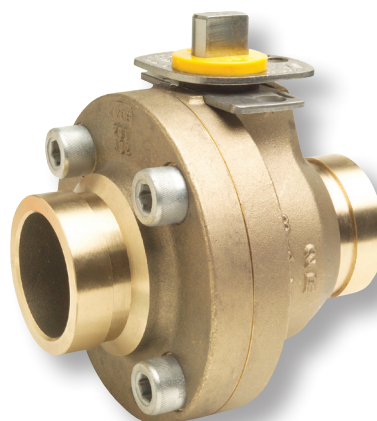


Grooved End Connection

Series F "9D" Nickel Aluminum Bronze

- ASTM B148 GR 955 "9D"
- Lever Operated Ball Valve
- 2000 PSI WP
- 2"
- Bolted Body Construction
 - Meets API 641 Emissions Standard
 - Enhanced Protection Against CO₂ and Saltwater Corrosion
 - Multi-Seal Seats
 - Fire Safe Design
 - NACE Standard
 - Minimizes Risk of Galling Associated with Stainless Steel
 - Exceptional Yield Strength
 - Rugged Locking Device Standard
 - Maintenance Free

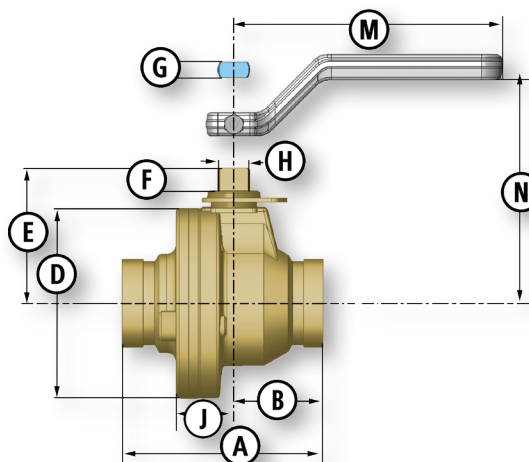


Material Description

ITEM	PART NAME	MATERIAL NACE (STANDARD)
1	Handle*	Carbon Steel
2	Handle Bolt	Standard Hex Bolt
3	Weather Guard	Polyethylene
4	Lock Plate Retainer	Stainless Steel
5	Lock Plate	Stainless Steel
6	Dust Cover	Polyethylene
7	Stop Plate Retainer	Stainless Steel
8	Stop Plate	Stainless Steel
9	Stem O-Ring	Fluorocarbon
10	Stem Seal	TFE
11	Stem	316 Stainless Steel
12	Ball	316 Stainless Steel
13	Ball Seat	Nylon (TFE Optional**)
14	Body O-Ring	Fluorocarbon
15	End Adapter	ASTM B148-9D (955)
16	Body	ASTM B148-9D (955)
17	Body Bolts	ASTM A193 B7M

* Handle is optional. Balon valves can also be operated with a standard open-end wrench.

** Seat selection may result in de-rating of pressure. See Seat Pressure Ratings chart on page B-37 for more information.



Dimensional Data

SIZE	CATALOG	PORT	WP	A	B	D	E	F	G	H	J	M	N	LBS.	HANDLE	Cv
2x1.5x2	2R-F94N-GE	1.5	2000	5.5	2.75	4.87	3.62	.75	.497	.873	1.62	7.25	5.25	11.5	P-4128-CS	140

* Balon manufactured Actuation Mounting Hardware available. Please see page A-2 for details.