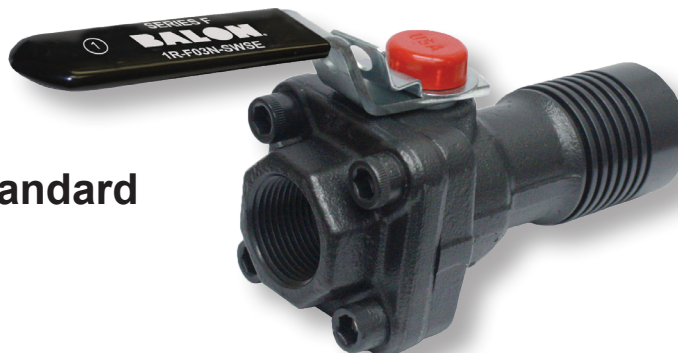


# Threaded End Connection Socket Weld

## Series F Carbon Steel

- Maintenance Free
- Bolted Body Construction
- 3000 PSI WP
- 1/2", 3/4" and 1"
- Forged Body and Adapter
- Meets API 641 Emissions Standard
- NACE Standard
- Low-Torque Operation
- Fire Safe Design
- Available in Low-Temperature Service to -50 °F
- Multi-Seal Seats
- Lever Operated Ball Valve

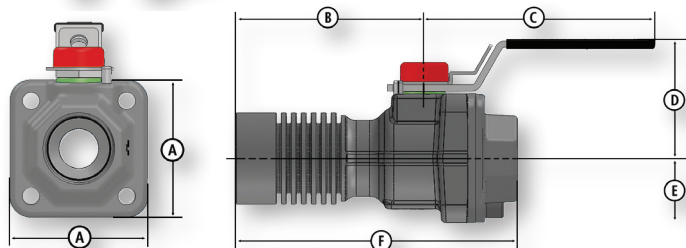
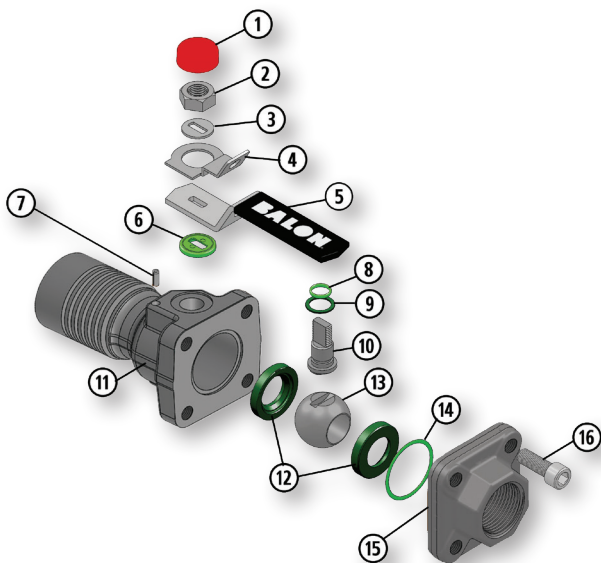


### Material Description

| ITEM | PART NAME     | MATERIAL (NACE)           | LOW TEMP (NACE)           |
|------|---------------|---------------------------|---------------------------|
| 1    | Weather Guard | Polyethylene              | Polyethylene              |
| 2    | Stem Nut      | Carbon Steel              | Carbon Steel              |
| 3    | Spacer        | Carbon Steel              | Carbon Steel              |
| 4    | Lock Plate    | Carbon Steel              | Carbon Steel              |
| 5    | Handle        | Carbon Steel              | Carbon Steel              |
| 6    | Stem Washer   | Acetal                    | Acetal                    |
| 7    | Stop Pin      | Carbon Steel              | Carbon Steel              |
| 8    | Stem O-Ring   | Fluorocarbon              | Fluorocarbon              |
| 9    | Stem Seal     | TFE                       | TFE                       |
| 10   | Stem          | 316 Stainless Steel       | 316 Stainless Steel       |
| 11   | Body          | ASTM A105, Normalized     | ASTM A350 LF2 CL1         |
| 12   | Seat          | Nylon 11 (TFE Optional**) | Nylon 11 (TFE Optional**) |
| 13   | Ball          | 316 Stainless Steel       | 316 Stainless Steel       |
| 14   | Body Seal     | Fluorocarbon              | Fluorocarbon              |
| 15   | End Adapter   | ASTM A105                 | ASTM A350 LF2 CL1         |
| 16   | Body Bolts    | ASTM A193 B7M             | ASTM A320 L7M             |

\* Handle and lock device are standard.

\*\* Seat selection may result in de-rating of pressure. See Seat Pressure Ratings chart on page B-37 for more information.



### Dimensional Data

| SIZE        | CATALOG NUMBER                     |                                   | PORT | WP   | A    | B    | C    | D    | E    | F    | LBS. | Cv |
|-------------|------------------------------------|-----------------------------------|------|------|------|------|------|------|------|------|------|----|
|             | NACE TRIM<br>316 SS<br>BALL & STEM | LOW TEMP<br>316 SS<br>BALL & STEM |      |      |      |      |      |      |      |      |      |    |
| .50x.50x.50 | 1/2F-F03N-SWSE                     | -                                 | .50  | 3000 | 1.92 | 3.38 | 3.50 | 1.96 | .96  | 5.00 | 2.00 | -  |
| .75x.75x.75 | 3/4F-F03N-SWSE                     | 3/4F-F03NL-SWSE                   | .75  | 3000 | 2.62 | 4.16 | 4.87 | 2.56 | 1.31 | 5.97 | 4.47 | -  |
| 1x.75x1     | 1R-F03N-SWSE                       | 1R-F03NL-SWSE                     | .75  | 3000 | 2.62 | 4.16 | 4.87 | 2.56 | 1.31 | 5.97 | 4.47 | 30 |